

Montgomery County Beekeepers Association

News Release MCBA

Vol. 90 Issue 3-June 2008

MCBA Motto: "Beekeepers Helping Beekeepers"

Summer Events:

MCBA PICNIC July 12th

4-H FAIR Aug 7th-9th

Mark Antunes Picnic Aug 17th



Calendar of Events

The MCBA board has planned another exciting calendar for our club. Regular general meetings will be held the second Tuesday of even months whenever possible. After the featured event, we will have a brief general business meeting. Board meetings will be held on the second Tuesday of odd months.

Sat, Jul 12 MCBA Summer Picnic. See below for information and bring your hive photos!

Aug 7-9 4-H Fair

Sun, Aug 17 Picnic at Mark Antunes house. See below for information

Tue, Sept 9 Board Meeting

Tue, Oct 14 Hand Cream Making

Sat, Nov 1 MCBA Banquet, Lower Providence Fire Hall

Tue, Nov 11 Board Meeting

HIVE REGISTRATION- IT'S THE LAW!

If you own and operate a hive in the state of Pennsylvania, you **MUST** register that hive with the PA Department of Agriculture. One of the many reasons this is important is the number of recent pests and diseases that affect bees. Part of being a responsible and neighborly beekeeper is

hive registration. Hive registration costs only \$10 and is good for 2 years. To register online go to <http://www.agriculture.state.pa.us/agriculture/cwp/view.asp?a=3&q=128082>



MCBA's NEW WEBSITE!

MCBA has entered the 21st century with a new website, designed by Becky Brewer. It looks great. Please pass the address on to anyone you know that might be interested to learn about us. Email addresses have also been set up so you can easily communicate with the board.

www.MontCoBeekeepers.org

President's Notes

Bowman's Hill Wildflower Preserve Field Trip

If spring showers bring May flowers we had plenty of both on our Bowman's Hill Wildflower Preserve event. After gathering as a group and getting a general presentation of the history of the preserve, we split into two groups to take in the sights, sounds, and smells. The rain made

speaking to and being heard by a large group difficult, which is particularly true when the audience is tucked under umbrellas with the percussive drum beat of rain drops tapping on one's mobile moisture shelter.

Nonetheless I had an excellent time. I was skeptical about going with the inclement weather, but as the newly elected president I felt duty bound to go even if I was the lone attendee for the wet flower tour. I was fortunate that Becky Brewer and Keith Snedeker gave me a ride in their hybrid Prius car. We produced a low carbon footprint and arrived in style. We carried a grand assortment of Becky's homemade cookies that we enjoyed after the tour. They were delicious! Thanks Becky.

My group was complemented by one member of the Chester County Beekeepers and our guide Kay Reed was extremely knowledgeable and answered a multitude of questions through out the tour. I was fascinated by the variety of flowering plants, bushes, and trees. The colors and complexity of the leaf structures were delightful to see while having it all explained as we strolled along. The ecological interdependency of the flora and fauna were very apparent. There was so much information presented that by the end of the tour, my head was swimming with names, facts, and tidbits of wild flower information. For example, the May Apple can reproduce from the spreading roots of only a single plant and the DNA of such a cluster of those plants is identical. But, the May Apple can also reproduce from the seeds of the May Apple fruit (apple). That is possible only if the fruit is first consumed and passed through the digestive system of its symbiotic animal partner – the Box Turtle. Otherwise the seeds will not germinate. The May Apple has been discovered to have compounds that are useful in fighting certain types of cancer.

According to our naturalist guides the next best time to visit is during the last two weeks of July. By then the meadow will be in full bloom. One hundred acres of the preserve is fenced in to keep the white tail deer out. That means fewer ticks and a flourishing under story of vegetation. You would be amazed at how thick the forest is when

the deer have not devoured most of what is within their reach. There were also many songbirds that were beautiful to see and hear. It was a great experience well worth repeating at another time. I highly recommend it to all. If you would like to plan a visit, here's the website:

<http://www.bhwp.org/>



You're Invited!

Why not attend an MCBA Executive Board meeting? All members are encouraged to join our fun filled board meetings. Call a board member – contact information at the end of the newsletter. We will be having board meetings on the second Tuesday of odd numbered months.

Club News



2008 Membership Dues Now is the time to pay your 2008 membership dues. Check your mailing label to verify that your membership is current. If your membership has expired, please complete the membership form at end of this newsletter. The dues are again \$10.00, the same as last year.

You may also wish to join the PSBA (Pennsylvania State Beekeepers Association) for

an additional \$20.00. Although membership in the state is optional, you will receive ten newsletters each year filled with useful beekeeping information and advertisements.

4-H Club News. The 4-H fair is scheduled for August 7-9, 2008 this year and we are all looking forward to making posters and entering honey. The 4-H kids would appreciate the help of more experienced beekeepers in staffing their booth at the fair. An observation hive would also be appreciated. Plus, the fair is great fun. If you can offer your experience to the young beekeepers, please call Michaeleen Pacholski at 610-409-0284 (evenings). Adults can also enter their honey, vegetables, art work, etc.

Electronic Communications MCBA has been trying to reduce operating costs by sending out e-mail reminders for upcoming events. As postal costs rise, we need to find ways of keeping you informed that are low cost. If you haven't received a reminder, maybe we don't have the proper e-mail address. Just send a note to montcobe@yahoo.com with your name and we will update our records. If you don't have e-mail, you will continue to receive paper mail.

MCBA July 12th Picnic

The MCBA July Picnic will take place at the Militia Hill picnic pavilion. The event begins at noon. Hamburgers and hotdogs will be provided along with the rolls and "fixins".

Please bring a side dish or dessert or both if you feel particularly energetic. You will need to bring lawn chairs and your own paper plates and eating utensils.

There will be a honey baked good contest, so make your favorite recipe and bring a copy. Bring your Home Sweet Home Pictures for an exhibit at the picnic, too (see next column) Don't forget to bring your lawn and outdoor games!

There will be a general business meeting prior to the hive tour to discuss topics of concern and the status of upcoming events.

Directions to Militia Hill:

From PA Turnpike exit 339 and PA route 309, take the Fort Washington Exit. From toll booths/309 exit continue west onto Pennsylvania Avenue. Follow Pennsylvania Avenue for approximately 1 mile. Turn left (south) onto Bethlehem Pike. Follow Bethlehem Pike to Skippack Pike/PA 73 West. Follow Skippack Pike for approximately 0.5 miles. Turn left onto Militia Hill Road just after crossing bridge. Turn left again to enter Militia Hill Day Use Area. Follow the park road for 1 mile; at the Y intersection bear left. The pavilion is located in Lot 1 on the left, across from the comfort station.

From the east, take PA 73 West and follow above directions.

From the west, take Skippack Pike/PA 73 East, turning right onto Militia Hill Road and following the above directions.

August 17th Picnic at Mark Antunes' House

A second picnic, at Mark Antunes house, will take place on August 17. Mark will give us a tour of his beehives and different races of bees he keeps.

Picnic starts at noon, please bring lawn chairs and a dish to pass.

Address: 932 Callowhill Rd.

Please RSVP to Mark at:

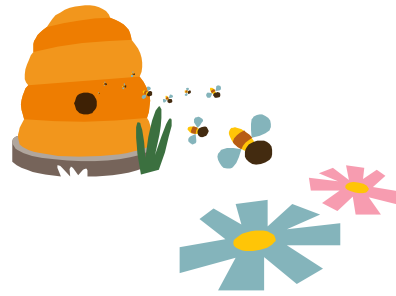
Honeyhillfarm@verizon.net or Phone #: 484-955-0768

“Home Sweet Home” Photo Exhibit Planned for July Picnic

Is your apiary whimsical? Floriferous? Color-themed? Are your hives creatively arranged to fit an unusual space? Do your hive exteriors serve double-duty as canvases for artistic expression? How do you personalize your bee yard?

Inspire us at the picnic! Bring a favorite photo of your decorated hive(s) or your overall apiary layout to hang on the display board we will provide. I know we are a creative bunch, so let's see how many unique ideas we can bring together for this display. See you at the picnic!

Contact Anne Brennan with questions at 215-376-0230 or anne.brennan@verizon.net



PSBA – The Pennsylvania State Beekeepers Association

Since its foundation in 1904, the **Pennsylvania State Beekeepers Association** has lobbied against adulteration of honey, crusaded for research to understand and control introduced parasites, promoted control of diseases and pests through integrated pest management techniques, disseminated information on modern practical apiary management to maintain a healthy honey bee pollination workforce, and educated the general public on the importance of honey bees and other beneficial insects.

Today, the Pennsylvania State Beekeepers Association assists beekeepers in all 67 counties of the State and encourages and assists new members to start beekeeping and increase the honey bee population to provide pollination for both agribusiness and the residential gardens of this Commonwealth.

PSBA members receive a monthly newsletter with timely articles and local advertisements. The association holds a summer picnic that is hosted by local bee organizations around the state and a two day annual meeting and banquet in November with national and international speakers. The PSBA website, www.pastatebeekeepers.org, contains articles and announcements of beekeeping classes and other issues of concern to the Pennsylvania beekeeping community. To join PSBA, please contact the MCBA treasurer or email treasurer@pastatebeekeepers.org.

Beginner Beekeeping Class

The Beginners Beekeeping Class has been going on once a month since February, but there's still time to join in and learn about beekeeping. **The 2008 course continues a tradition of hands-on beekeeping at the Montgomery County (Skippack) 4-H Center Apiary!**

When: Classes are usually held on the **last Tuesday** of each month from **February to September**. **The June class will be on 4th Monday 6/ 23**. Classroom activities start at **7:00pm**. Hands-on activities in the apiary start at **6:00pm**. Please bring a face veil if you have one.

Attendance: The course does not need to be taken in its entirety. You can start midyear or attend individual sessions. The 6:00pm activity in the apiary is optional. If you cannot attend, just come for the classroom portion at 7:00pm.

Where: Montgomery County 4-H Center, 1015 Bridge Rd (Rte 113), Skippack, PA 19426.

Cost: The cost for the course is \$10.00 per household for the year. If you have already attended the class in previous years, there is no additional charge to attend refresher classes this year. It is also recommended that you join the Montgomery County Beekeepers Association (MCBA) and the PA State Beekeepers Association (PSBA) to receive newsletters and participate in club activities.

Contact: Jim Bobb, (610) 584-6778 or JimBobb@gct21.net, for more info.



Meet Your Local

Beekeeper!

As a feature to our newsletter, we will introduce you to some of the beekeepers in our club so we can get to know each other better. If you have suggestions for the next featured beekeepers or some questions you would like to ask, contact Judith Finkelstein at:

News@MontCoBeekeepers.org

This month's "Meet Your Local Beekeeper" features Joe Duffy

Joe is someone many of us know but we asked some questions to find out more about him.

How long have you been keeping bees and how did you get started in beekeeping?

I've been keeping bees for over 30 years. A good friend, Ed Blezer, and I were in a camera club together in Germantown. My friend moved to Glenside and began to keep bees, so I became interested, too. I took a course at Del Val College to learn about bees and then I joined MCBA. My friend and I went to EAS meetings together. I currently have about 25-30 hives at several locations.

I've seen your honey at Bartram's Garden. Where else do you have hives?

I have 2 or 3 hives at Bartram's Garden. My friend, Ed Belzer, who passed away, passed the hives on to me. It's really great being in the garden there. I also have bees at Awbury Arboretum, Wyck, and an observation hive at Schuylkill Valley Nature Center. The hives at Wyck died so they need to get up and running again.

Do you make and sell bee products besides honey?

Yes. I also make candles and sell them. It's a project to clean, melt, and strain the wax before pouring it into the molds. Sometimes I make comb honey.

There are many current issues in beekeeping to focus on, such as CCD and Africanized bees. Do you have a current focus or project related to bee issues?

The small hive beetle is an issue because they can cause a lot of damage to the hive. To get rid of the hive beetle, you go in and take as many off the hive as possible and to localize the beetles. Try to get rid of the larvae. I take the frames out and wash them off with water to clean out the larvae. If there's honey in the frames, put them in another hive so the bees can clean out the honey.

What are 1 or 2 essential pointers you would tell a novice beekeeper?

If you think your bees may swarm, try putting 2 supers on and then move the inner cover up and put on 1 or 2 more supers. Come back in a few days and check to see if the bees have moved up into the upper supers. If they have, put the inner cover back up to the top, to give them some more room.

Honey Recipe

Honey Granola Squares

3 cups low-fat granola

3/4 cup dried fruit (apples, apricots, cherries, cranberries or pears), finely chopped

1/2 cup honey

1/4 cup vegetable oil

3/4 teaspoon vanilla extract

3 egg whites, lightly beaten

In a large bowl, mix together granola and dried fruit. In a small saucepan, heat honey, oil and vanilla over medium heat, stirring until honey is dissolved. Pour honey mixture over granola and mix until thoroughly coated. Pour egg whites over granola mixture; mix well. Pack mixture firmly into an 8-inch square nonstick baking pan. Bake at 325°F for 40 minutes or until deep golden brown. Place pan on a cooling rack; cool completely before cutting into squares, approximately 2-1/2-inches each.

Kids Corner- Poetry

Fiona and the Bees

It was on that sunny, summery day
That we would surely have a fright.
At first we found ourselves at play,
Meanwhile, our moms were out of sight.

As boredom settled, late after noon
Three of us sauntered into the shade,
Near the edge of the tree-lined lot,
Completely safe *if* we had stayed.

But Fiona was a tiny friend
With a secret hiding near the trees.
In a wooden box, there was a nest
Where her mother kept a thousand bees.

I watched her at a certain distance,
Another little friend with me.
We both went numb with disbelief
For what came next for all to see...

She went straight for the big white box,
Which is where, of course, the bees were hid.
But she should have paused to think a bit!
Instead she *lifted up the lid*.

She let out a shriek, but all too late
Though we ran panicked down the block
They swarmed her strawberry-golden hair
Bees covered Fiona, shirt to sock.

Then moms flew out and joined the ruckus,
As we stood guilty-faced you see...
Somehow the fun had just turned serious,
And Fiona got whisked to the pharmacy.

Everyone that day, will never forget,
The dappled sun among the trees.
Laughter and cheer had marked that day
Until Fiona shared the bees.

Other Dates to Remember

PSBA Summer Meeting and Picnic

Friday & Saturday, July 18-19, 2008. Join us for education and social functions. Friday at Penn State University for queen rearing, bee management, research updates and other educational events. Saturday is hay ride, barbeque, and homemade ice cream at Craig Cella's. See www.pastatebeekeepers.org for more information.

Eastern Apicultural Society

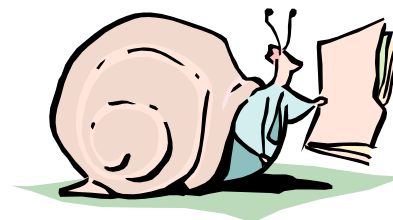
August 4-6 Short Course
August 6-8 Conference and Workshops
Murray State University, Murray, Kentucky
See www.easternapiculture.org for more information.

Western Apiculture Society of North America (WAS)

August 17-21, 2008 at the Holiday Inn, Victoria, British Columbia. Watch the WAS website at <http://groups.uncanr.org/WAS/> for more details as they become available or contact the organizing committee c/o Brian Scullion 250-385-7129 or scullion@shaw.ca

PSBA Annual Meeting

Friday and Saturday, November 7-8, 2008 at the Country Cupboard/Best Western in Lewisburg.



It's Not Too Late!!

We are still accepting completed beekeeper surveys, so please be sure that your voice is heard!

The survey is available for download on the first page of the website www.montcobeekkeepers.org at the bottom of the right-hand column.

If you want a hard copy, contact Becky at 215-453-6545.

2008 Beginners Beekeeping Calendar

<p>*Mon, June 23, 2008 6:00 PM 7:00 PM</p>	<p>In the Beeyard: Sugar Rolls – bring veil – no gloves Introduction to Mites * Note: This is the 4th Monday of the month.</p>
<p>Tue, July 29, 2008 6:00 PM 7:00 PM</p>	<p>In the Beeyard: Treatments – bring veil – no gloves Harvesting & Extracting Honey</p>
<p>Tue, August 26, 2008 6:00 PM 7:00 PM</p>	<p>In the Beeyard: Removing Honey Supers – bring veil Bee Diseases & Treatments</p>
<p>Tue, September 30, 2008 6:00 PM 7:00 PM</p>	<p>In the Beeyard: Mouse Guards – bring veil – no gloves Fall Management - Feeding Bees - Overwintering Bees - Overwintering Supers - The Beekeepers Year</p>

Topics subject to change based on group interest,

Montgomery County Membership Renewal Form

Name _____

Address _____

City/State/Zip _____

Email Address _____

Phone Number _____

Dues are for the 2008 Season

I prefer electronic newsletters and meeting reminders.

MCBA DUES \$10.00 per year \$ _____

PSBA DUES \$20.00 per year \$ _____ (Recommended)

TOTAL ENCLOSED \$ _____

Make Checks Payable to "M.C.B.A."

and mail to:

Anne Brennan

145 Cedar St

Jenkintown, PA 19046

Thank you!

News Release MCBA VOLUME 90 ISSUE 3
June 2008

MCBA Motto: "Beekeepers Helping Beekeepers"

MCBA OFFICERS and Executive Committee Members – 2006

President	Mark Antunes			President@MontCoBeekeepers.org
Vice President	Carmen Venezia	Lower Providence	(610) 489-8487	
Secretary	Allison Uehling	Glenside	(215) 881-9512	Secretary@MontCoBeekeepers.org
Treasurer	Anne Brennan	Jenkintown	(215) 376-0230	Treasurer@MontCoBeekeepers.org
Exec Comm Mem	Robin Kugler	Douglasville	(484) 955-9240	rku469@aol.com
Exec Comm Mem	Harold Jenkins	Lansdale	(215) 855-5613	
Exec Comm Mem	Tara Purcell	Doylestown	215 536-7050	purcelltara@hotmail.com
Newsletter Editor	Judith Finkelstein	Erdenheim	(267) 235-7513	judifinkl@hotmail.com
PSBA Rep	Harold Jenkins	Lansdale	(215) 855-5613	

Montgomery County Beekeepers Association
c/o Anne Brennan
145 Cedar St
Jenkintown, PA 19046
Return Service Requested

